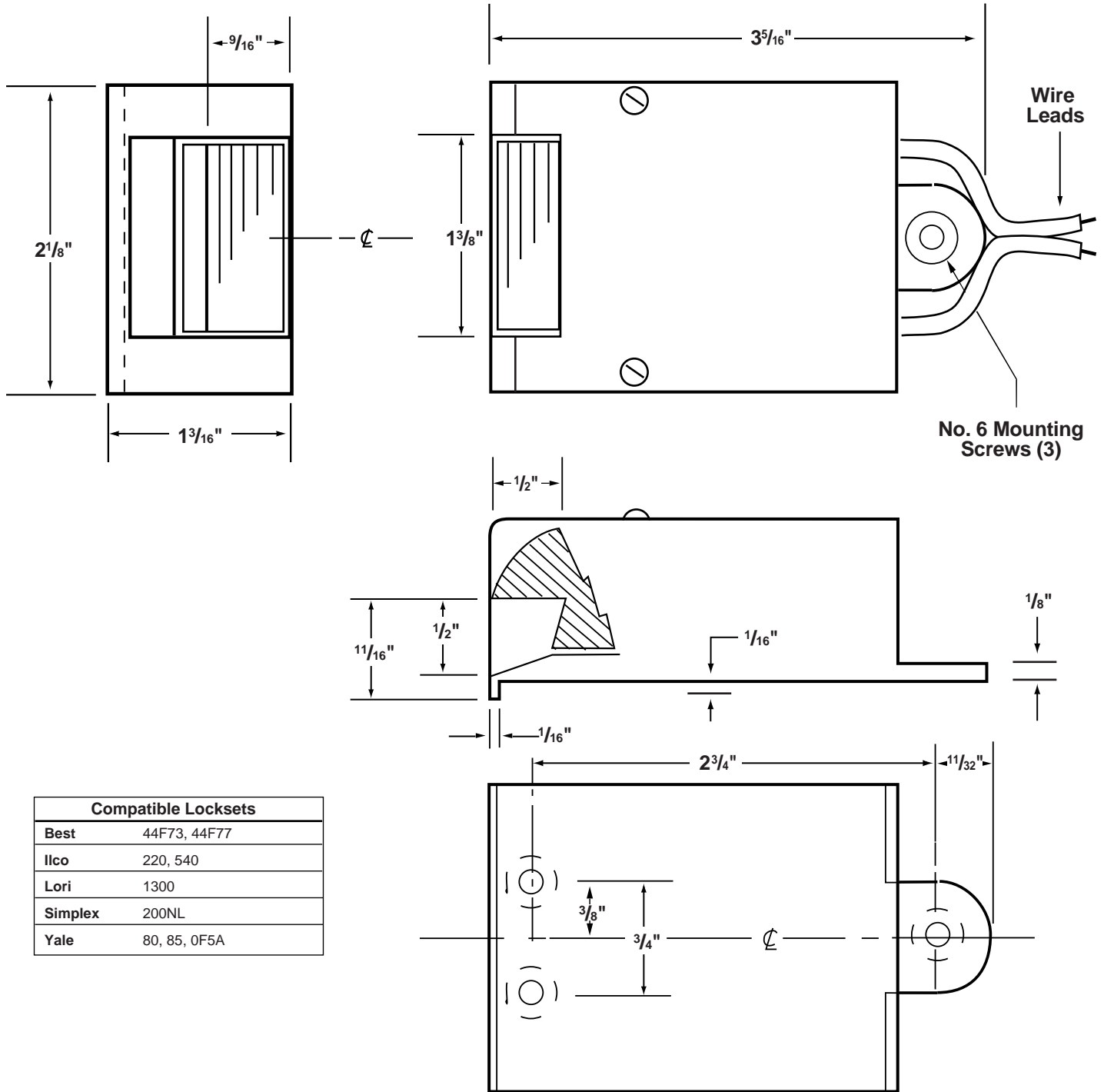


Cat. No. 6

Application

For surface mount installations on metal or wood jambs for in-swinging applications. Use with locksets or night latches having up to 1/2" throw. When mounted on a pair of doors, strike is mounted to the inactive leaf.



Note: **COMPATIBLE LOCKSET** designations are offered as a convenience only; reference should be made to manufacturer's catalogs for complete data as to exact equivalents. Caution must be taken in the alignment of locks with latchbolts (only) when used with our electric strike. Lee Electric, Inc. assumes no liability for differences between items compared.